

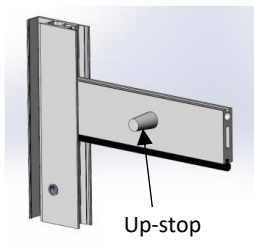


(239) 938-1000 | StormSmart.com

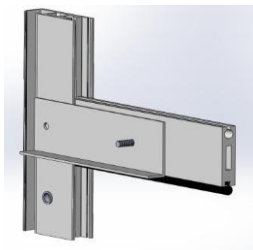
## Wind Brace Installation Instructions

1. Lower Storm Catcher Roll-Down to shoulder height.
2. Remove Up-stop from Bottom Bar (2) by rotating counterclockwise.
  - a. Remove bolt along with it.
3. Insert  $\frac{1}{4}$ " x 2" Sidewalk Bolt (5) and Spacer (10) provided.
4. Insert 1" x 3" (3) angle over Sidewalk Bolt (5).
5. Insert Washer (8), Lock Washer (9), and Wingnut (6) over Sidewalk Bolt (5).
6. Repeat steps 2-5 for other side of Bottom Bar (2).
7. Lower Storm Catcher Roll-Down to the ground.
8. Insert  $\frac{3}{8}$ " x 1" Sidewalk Bolt (7) through angle (3) and into track (1) on both sides.
9. Your Bottom Bar is now secured and locked in place.
10. Avoid using the Storm Catcher Roll-Down until everything has been removed to avoid damage.

After Step 1



After Step 4



After Step 5



After Step 8

